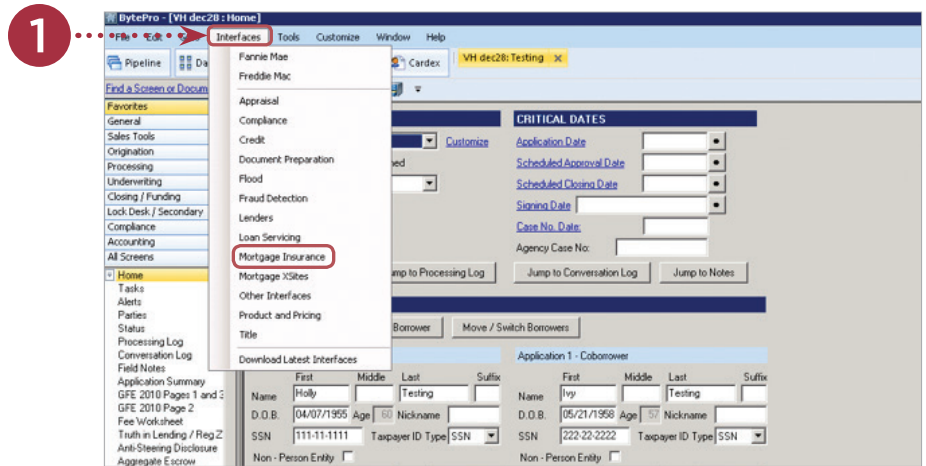
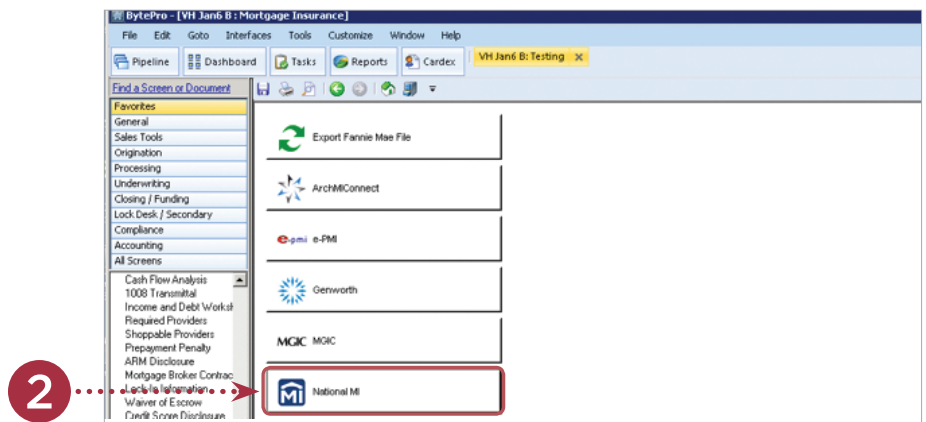


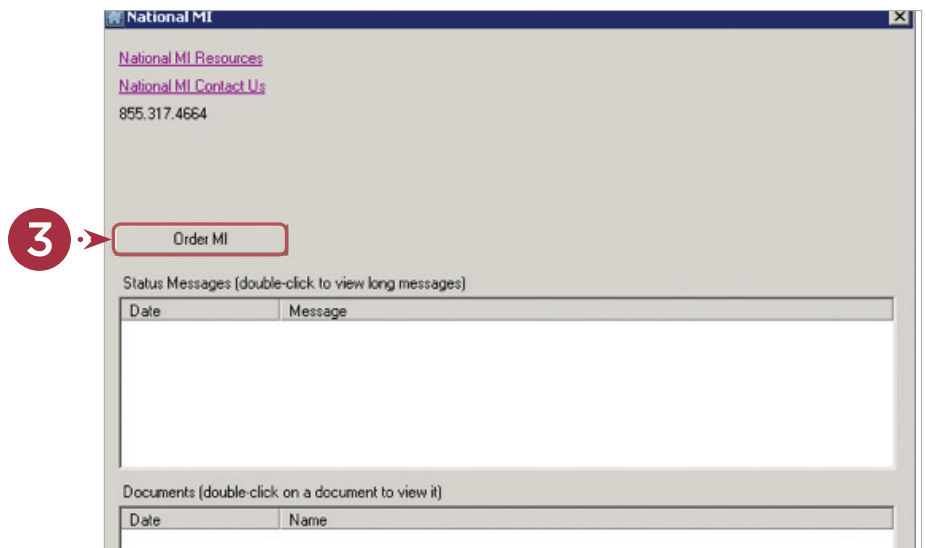
1. When your BytePro application is complete and ready for ordering mortgage insurance, select **Interfaces / Mortgage Insurance**:



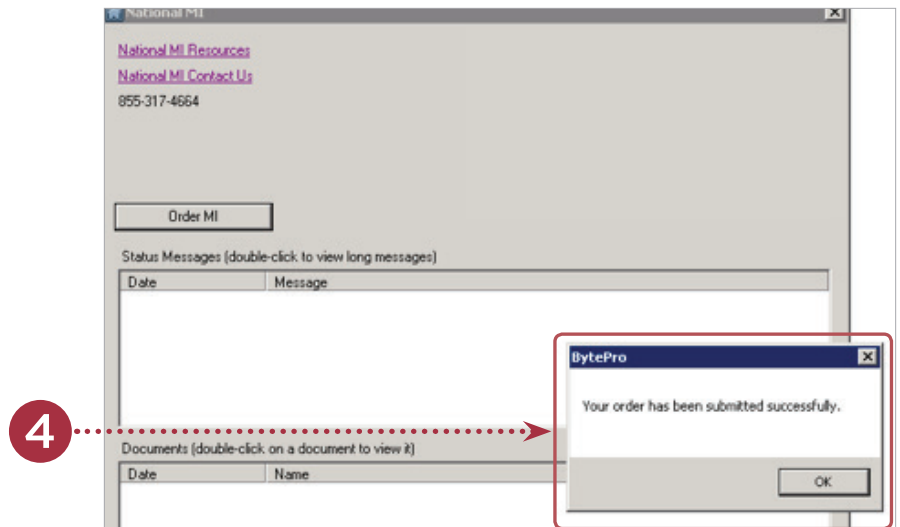
2. Then Select **National MI**.



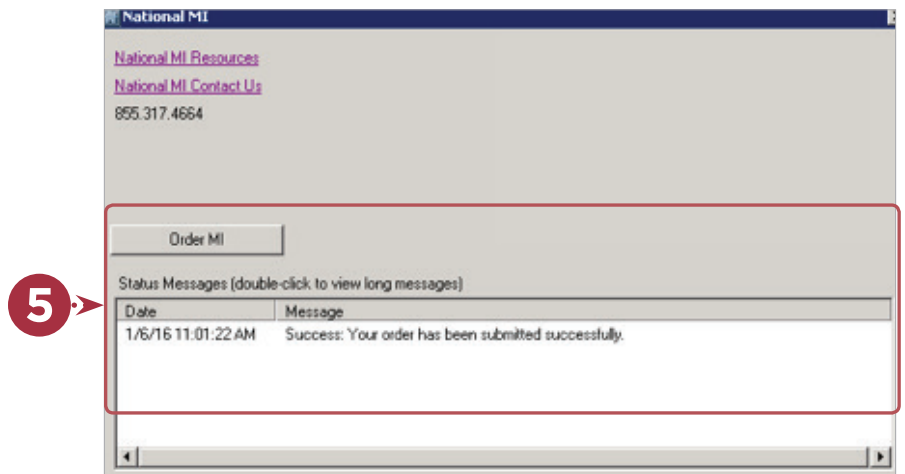
3. At the National MI order window, select **Order MI**:



- You will then see the pop-up notification of **“Your order has been submitted successfully”**, which will display in the Message Field:

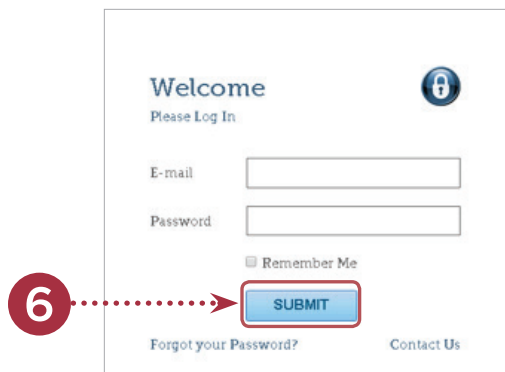


- Your loan data has been imported automatically to National MI's AXIS site which can be accessed once you log in with your National MI credentials.

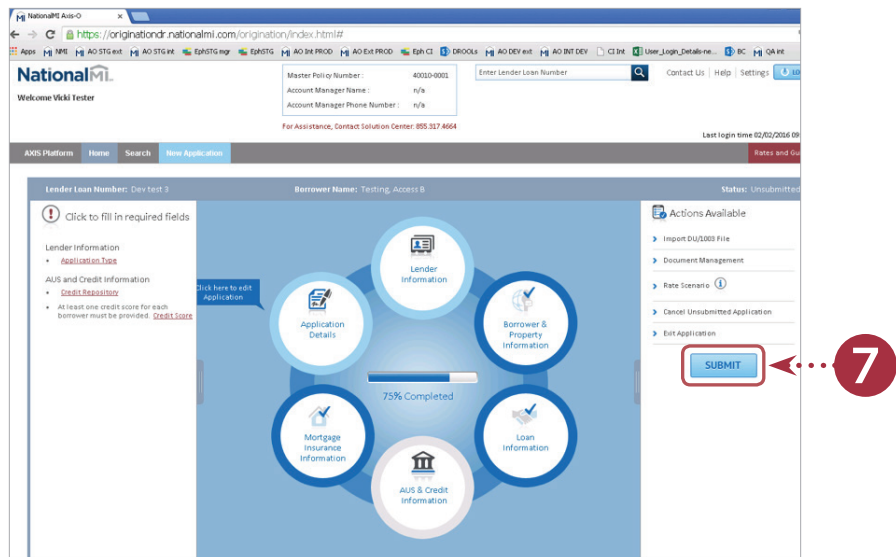


- You will automatically be directed to axis.nationalmi.com to access your MI application.

Once you enter your Email and Password on the Log In screen, please click the **“Submit”** button. You will then be presented with the following page that provides a list of data fields to be completed in AXIS:



7. Upon completion of the supplemental data for the loan, please upload your borrower's loan file in the Document Management tab if applicable (for a Non-Delegated submission), and select "Submit" to process your MI application.



Thank you for choosing National MI

Additional Resources & Quick Links:

- AXIS quick video tutorials such as: "How to Set Your Preferences" and save time nationalmi.com/axis-resources
- Technology Partners: nationalmi.com/tech-partners
- Delegated Underwriting: nationalmi.com/del-welcome
- Non-Delegated Underwriting: nationalmi.com/nondel-welcome

Find your National MI Sales Advisor:
nationalmi.com/sales-advisors

Questions: National MI Solution Center
855.317.4NMI (4664)
solutioncenter@nationalmi.com